



[SARC Home](#) » Julia Lee Performing Arts Academy

2019–2020 School Accountability Report Card

Translation Disclaimer

School Accountability Report Card

Reported Using Data from the 2019–2020 School Year

California Department of Education

By February 1 of each year, every school in California is required by state law to publish a School Accountability Report Card (SARC). The SARC contains information about the condition and performance of each California public school. Under the Local Control Funding Formula (LCFF) all local educational agencies (LEAs) are required to prepare a Local Control and Accountability Plan (LCAP), which describes how they intend to meet annual school-specific goals for all pupils, with specific activities to address state and local priorities. Additionally, data reported in an LCAP is to be consistent with data reported in the SARC.

- For more information about SARC requirements, see the California Department of Education (CDE) SARC web page at <https://www.cde.ca.gov/ta/ac/sa/>.
- For more information about the LCFF or LCAP, see the CDE LCFF web page at <https://www.cde.ca.gov/fg/aa/lc/>.
- For additional information about the school, parents/guardians and community members should contact the school principal or the district office.

DataQuest

DataQuest is an online data tool located on the CDE DataQuest web page at <https://dq.cde.ca.gov/dataquest/> that contains additional information about this school and comparisons of the school to the district and the county. Specifically, DataQuest is a dynamic system that provides reports for accountability (e.g., test data, enrollment, high school graduates, dropouts, course enrollments, staffing, and data regarding English learners).

California School Dashboard

The California School Dashboard (Dashboard) <https://www.caschooldashboard.org/> reflects California's new accountability and continuous improvement system and provides information about how LEAs and schools are meeting the needs of California's diverse student population. The Dashboard contains reports that display the performance of LEAs, schools, and student groups on a set of state and local measures to assist in identifying strengths, challenges, and areas in need of improvement.

Mrs. Tanya Taylor, Executive Director

- Principal, Julia Lee Performing Arts Academy

About Our School

Greetings, I am Rachel A. Thomas, the principal at Julia Lee Performing Arts Academy.

The vision for Julia Lee Performing Arts Academy ("JLPAA") was born out of the belief that every child has the right to an excellent education. Starting with a core group of educators and business leaders who are committed to educational equity, we designed a school where all children could learn at high levels, while allowing our children to explore the arts in a capacity that offers beyond what is required by the state of California. Schools delivering Visual and Performing Arts closely aligned to a college preparatory education have proven very effective at preparing students for finishing college and beyond.

Contact

Julia Lee Performing Arts Academy
19740 Grande Ave.
Lake Elsinore, CA 92530-6426

Phone: 951-595-4500

Email: kjudge@jlpaschool.org

About This School

Contact Information (School Year 2020–2021)

District Contact Information (School Year 2020–2021)	
District Name	Riverside County Office of Education
Phone Number	(951) 826-6530
Superintendent	Judy White
Email Address	jdwhite@rcoe.us
Website	http://www.rcoe.us

School Contact Information (School Year 2020–2021)	
School Name	Julia Lee Performing Arts Academy
Street	19740 Grande Ave.
City, State, Zip	Lake Elsinore, Ca, 92530-6426
Phone Number	951-595-4500
Principal	Mrs. Tanya Taylor, Executive Director
Email Address	kjudge@jlpaa.school.org
Website	jlpaa.org
County-District-School (CDS) Code	33103300137851

Last updated: 1/14/2021

School Description and Mission Statement (School Year 2020–2021)

Mission Statement

The Julia Lee Performing Arts Academy will be a high quality educational program for students in grades TK-8 that develops the whole person through a curriculum that integrates both performing arts and college preparatory academics. The Julia Lee Performing Arts Academy strives to develop the students academically, artistically and socially so that they leave the school as independent, cooperative, responsible and creative young adults with a lifelong interest and ability in learning and the arts. As we encourage and provide our students with the foundation of these skills and qualities, we will prepare our students to pursue further educational goals and allow them to contribute to the life and wellbeing of society as a whole.

Our Mission Includes:

" A strong academic program that unlocks and supports the artistic potential of our students, while providing a rigorous liberal arts education and performing arts program.

" An encouraging atmosphere where each individual can work in a creative, cooperative and collaborative manner, while promoting the desire for excellence in one's chosen pursuits.

" The promotion of independent thinking in the areas of academics and performing arts.

" A participative and creative environment placed within a firm framework of high standards in teaching and learning.

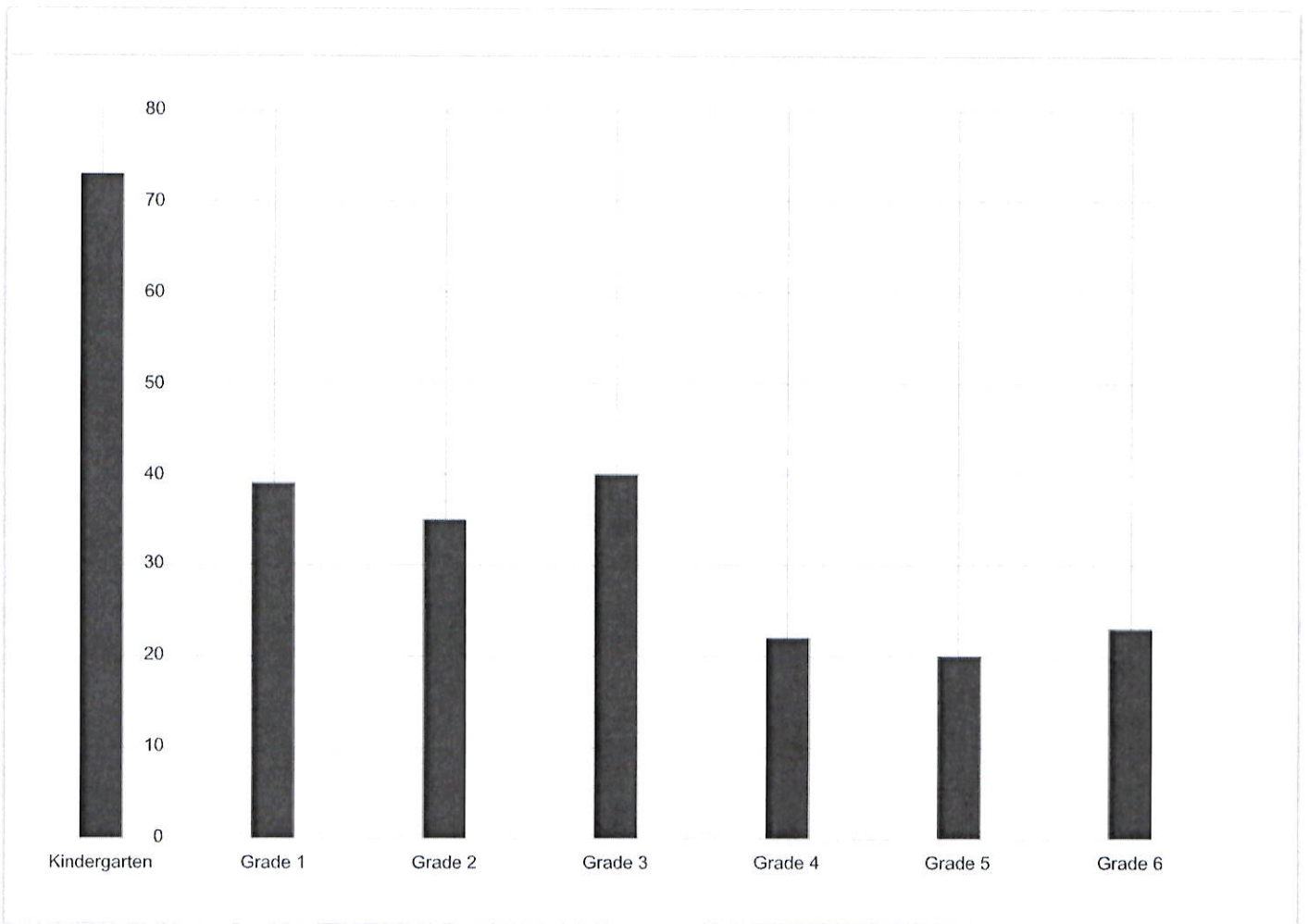
" The development of students' individual talents, critical thinking, and technology skills by being actively engaged in the learning process.

" A continuous commitment to improvement ensuring that our students are well-rounded, self-directed, lifelong learners.
 " A group of teachers, administrators, parents, and the community sharing the responsibility for advancing the school's mission while promoting high standards and expectations.

Last updated: 1/14/2021

Student Enrollment by Grade Level (School Year 2019–2020)

Grade Level	Kindergarten	Grade 1	Grade 2	Grade 3	Grade 4	Grade 5	Grade 6	Total Enrollment
Number of Students	73	39	35	40	22	20	23	252



Last updated: 1/14/2021

Student Enrollment by Student Group (School Year 2019–2020)

Student Group	Black or African American	American Indian or Alaska Native	Asian	Filipino	Hispanic or Latino
Percent of Total Enrollment	15.10 %	%	%	%	60.30 %

Student Group (Other)	Socioeconomically Disadvantaged	English Learners	Students with Disabilities	Foster Youth
Percent of Total Enrollment	62.30 %	14.70 %	4.00 %	0.80 %

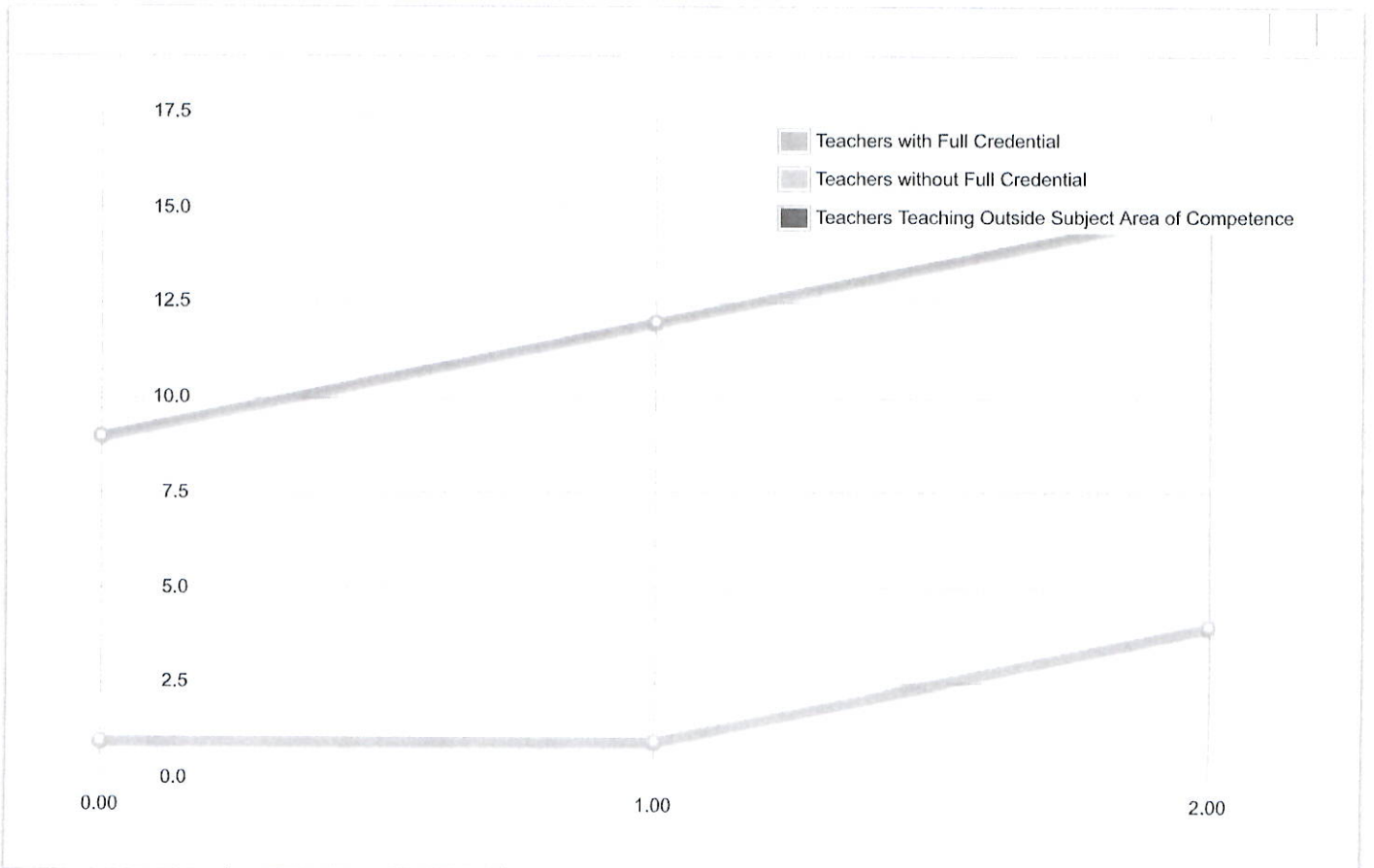
State Priority: Basic

The SARC provides the following information relevant to the State priority: Basic (Priority 1):

- Degree to which teachers are appropriately assigned and fully credentialed in the subject area and for the pupils they are teaching;
- Pupils have access to standards-aligned instructional materials; and
- School facilities are maintained in good repair

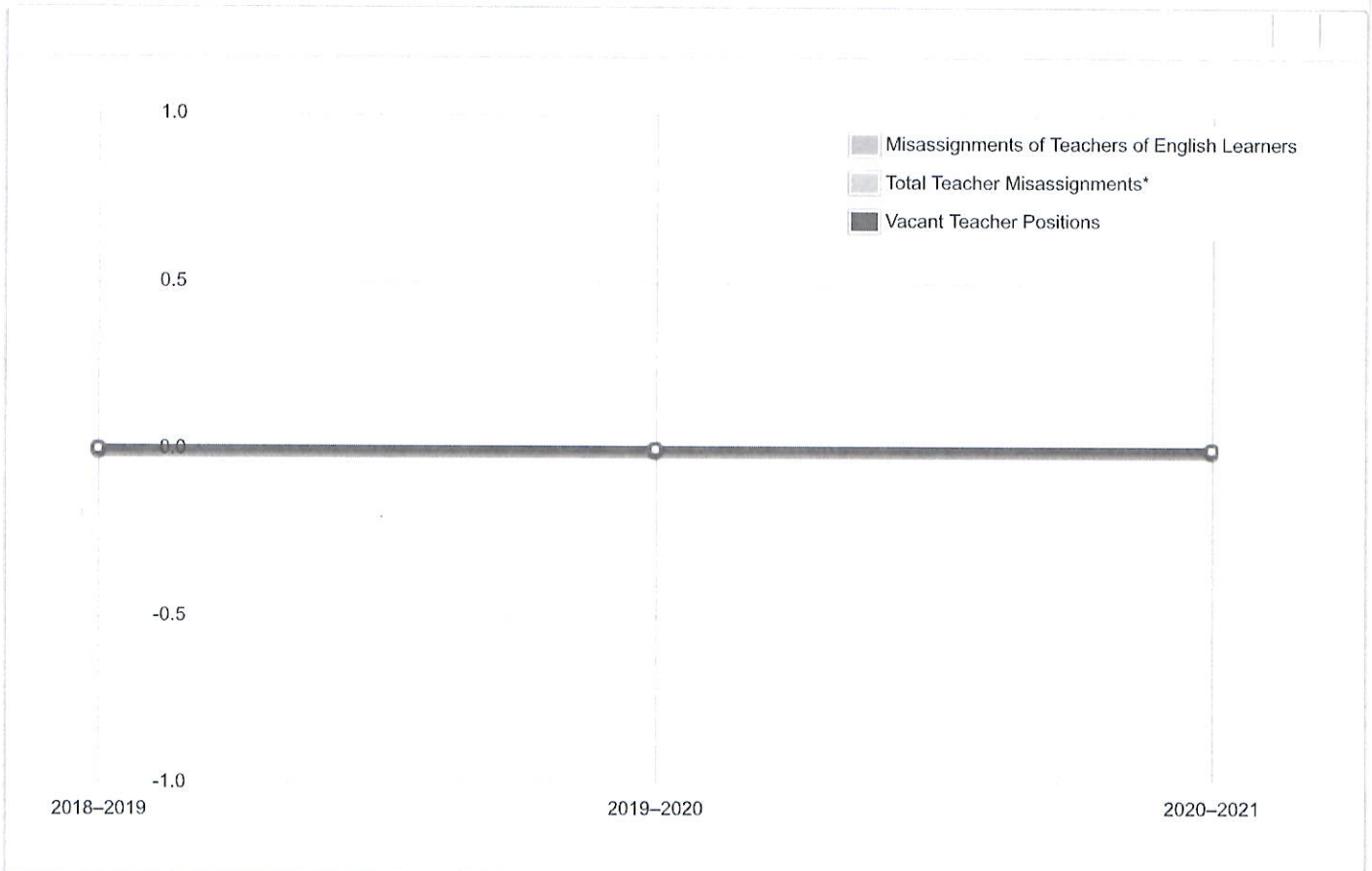
Teacher Credentials

Teachers	School 2018–2019	School 2019–2020	School 2020–2021	District 2020–2021
With Full Credential	9	12	15	
Without Full Credential	1	1	4	
Teachers Teaching Outside Subject Area of Competence (with full credential)				



Teacher Misassignments and Vacant Teacher Positions

Indicator	2018–2019	2019–2020	2020–2021
Misassignments of Teachers of English Learners	0	0	0
Total Teacher Misassignments*	0	0	0
Vacant Teacher Positions	0	0	0



Note: "Misassignments" refers to the number of positions filled by teachers who lack legal authorization to teach that grade level, subject area, student group, etc.

* Total Teacher Misassignments includes the number of Misassignments of Teachers of English Learners.

Quality, Currency, Availability of Textbooks and Other Instructional Materials (School Year 2020–2021)

Year and month in which the data were collected: January 2021

Subject	Textbooks and Other Instructional Materials/year of Adoption	From Most Recent Adoption?	Percent Students Lacking Own Assigned Copy
Reading/Language Arts		Yes	0.00 %

Subject	Textbooks and Other Instructional Materials/year of Adoption	From Most Recent Adoption?	Percent Students Lacking Own Assigned Copy
Mathematics		Yes	0.00 %
Science			0.00 %
History-Social Science		Yes	0.00 %
Foreign Language	N/A		0.00 %
Health			0.00 %
Visual and Performing Arts	Students participate in music and dance 4 hours a week		0.0 %
Science Lab Eqmpt (Grades 9-12)	N/A	N/A	0.0 %

Note: Cells with N/A values do not require data.

Last updated: 1/19/2021

School Facility Conditions and Planned Improvements

Julia Lee Performing Arts Academy leases the space from Elsinore First Assembly Church. The church continues to check conditions of the building on a regular basis. No repairs at this time are needed.

Last updated: 1/19/2021

School Facility Good Repair Status

Using the **most recently collected** Facility Inspection Tool (FIT) data (or equivalent), provide the following:

- Determination of repair status for systems listed
- Description of any needed maintenance to ensure good repair
- The year and month in which the data were collected
- The rate for each system inspected
- The overall rating

Year and month of the most recent FIT report: February 2021

System Inspected	Rating	Repair Needed and Action Taken or Planned
Systems: Gas Leaks, Mechanical/HVAC, Sewer	Good	
Interior: Interior Surfaces	Good	
Cleanliness: Overall Cleanliness, Pest/Vermin Infestation	Good	

System Inspected	Rating	Repair Needed and Action Taken or Planned
Electrical: Electrical	Good	
Restrooms/Fountains: Restrooms, Sinks/Fountains	Poor	
Safety: Fire Safety, Hazardous Materials	Good	
Structural: Structural Damage, Roofs	Good	
External: Playground/School Grounds, Windows/Doors/Gates/Fences	Good	

Overall Facility Rate

Year and month of the most recent FIT report: February 2021

Overall Rating	Good
----------------	------

Last updated: 1/19/2021

State Priority: Pupil Achievement

The SARC provides the following information relevant to the State priority: Pupil Achievement (Priority 4):

- **Statewide assessments** (i.e., California Assessment of Student Performance and Progress [CAASPP] System, which includes the Smarter Balanced Summative Assessments for students in the general education population and the California Alternate Assessments [CAAs] for English language arts/literacy [ELA] and mathematics given in grades three through eight and grade eleven. Only eligible students may participate in the administration of the CAAs. CAAs items are aligned with alternate achievement standards, which are linked with the Common Core State Standards [CCSS] for students with the most significant cognitive disabilities); and
- The percentage of students who have successfully completed courses that satisfy the requirements for entrance to the University of California and the California State University, or career technical education sequences or programs of study.

CAASPP Test Results in ELA and Mathematics for All Students

Grades Three through Eight and Grade Eleven

Percentage of Students Meeting or Exceeding the State Standard

Subject	School 2018– 2019	School 2019– 2020	District 2018– 2019	District 2019– 2020	State 2018– 2019	State 2019– 2020
English Language Arts / Literacy (grades 3-8 and 11)	35.0%	N/A	43.0%	N/A	50%	N/A
Mathematics (grades 3-8 and 11)	26.0%	N/A	30.0%	N/A	39%	N/A

Note: Cells with N/A values do not require data.

Note: The 2019–2020 data are not available. Due to the COVID-19 pandemic, Executive Order N-30-20 was issued which waived the requirement for statewide testing for the 2019–2020 school year.

Note: Percentages are not calculated when the number of students tested is ten or less, either because the number of students in this category is too small for statistical accuracy or to protect student privacy.

Note: ELA and mathematics test results include the Smarter Balanced Summative Assessment and the CAA. The "Percent Met or Exceeded" is calculated by taking the total number of students who met or exceeded the standard on the Smarter Balanced Summative Assessment plus the total number of students who met the standard (i.e., achieved Level 3-Alternate) on the CAAs divided by the total number of students who participated in both assessments.

Last updated: 1/19/2021

CAASPP Test Results in ELA by Student Group
Grades Three through Eight and Grade Eleven (School Year 2019–2020)

Student Group	Total Enrollment	Number Tested	Percent Tested	Percent Not Tested	Percent Met or Exceeded
All Students	N/A	N/A	N/A	N/A	N/A
Male	N/A	N/A	N/A	N/A	N/A
Female	N/A	N/A	N/A	N/A	N/A
Black or African American	N/A	N/A	N/A	N/A	N/A
American Indian or Alaska Native	N/A	N/A	N/A	N/A	N/A
Asian	N/A	N/A	N/A	N/A	N/A
Filipino	N/A	N/A	N/A	N/A	N/A
Hispanic or Latino	N/A	N/A	N/A	N/A	N/A
Native Hawaiian or Pacific Islander	N/A	N/A	N/A	N/A	N/A
White	N/A	N/A	N/A	N/A	N/A
Two or More Races	N/A	N/A	N/A	N/A	N/A
Socioeconomically Disadvantaged	N/A	N/A	N/A	N/A	N/A
English Learners	N/A	N/A	N/A	N/A	N/A
Students with Disabilities	N/A	N/A	N/A	N/A	N/A
Students Receiving Migrant Education Services	N/A	N/A	N/A	N/A	N/A
Foster Youth	N/A	N/A	N/A	N/A	N/A
Homeless	N/A	N/A	N/A	N/A	N/A

Note: Cells with N/A values do not require data.

Note: The 2019–2020 data are not available. Due to the COVID-19 pandemic, Executive Order N-30-20 was issued which waived the requirement for statewide testing for the 2019–2020 school year.

Last updated: 1/19/2021

CAASPP Test Results in Mathematics by Student Group
Grades Three through Eight and Grade Eleven (School Year 2019–2020)

Student Group	Total Enrollment	Number Tested	Percent Tested	Percent Not Tested	Percent Met or Exceeded
All Students	N/A	N/A	N/A	N/A	N/A
Male	N/A	N/A	N/A	N/A	N/A
Female	N/A	N/A	N/A	N/A	N/A
Black or African American	N/A	N/A	N/A	N/A	N/A
American Indian or Alaska Native	N/A	N/A	N/A	N/A	N/A
Asian	N/A	N/A	N/A	N/A	N/A
Filipino	N/A	N/A	N/A	N/A	N/A
Hispanic or Latino	N/A	N/A	N/A	N/A	N/A
Native Hawaiian or Pacific Islander	N/A	N/A	N/A	N/A	N/A
White	N/A	N/A	N/A	N/A	N/A
Two or More Races	N/A	N/A	N/A	N/A	N/A
Socioeconomically Disadvantaged	N/A	N/A	N/A	N/A	N/A
English Learners	N/A	N/A	N/A	N/A	N/A
Students with Disabilities	N/A	N/A	N/A	N/A	N/A
Students Receiving Migrant Education Services	N/A	N/A	N/A	N/A	N/A
Foster Youth	N/A	N/A	N/A	N/A	N/A
Homeless	N/A	N/A	N/A	N/A	N/A

Note: Cells with N/A values do not require data.

Note: The 2019–2020 data are not available. Due to the COVID-19 pandemic, Executive Order N-30-20 was issued which waives the requirement for statewide testing for the 2019–2020 school year.

Last updated: 1/19/2021

**CAASPP Test Results in Science for All Students
Grades Five, Eight and High School
Percentage of Students Meeting or Exceeding the State Standard**

Subject	School 2018–2019	School 2019–2020	District 2018–2019	District 2019–2020	State 2018–2019	State 2019–2020
Science (grades 5, 8, and high school)	18	N/A	23	N/A	30	N/A

Note: Cells with N/A values do not require data.

Note: The 2019–2020 data are not available. Due to the COVID-19 pandemic, Executive Order N-30-20 was issued which waived the requirement for statewide testing for the 2019–2020 school year.

Note: The new California Science Test (CAST) was first administered operationally in the 2018–2019 school year.

Last updated: 1/19/2021

**CAASPP Tests Results in Science by Student Group
Grades Five, Eight and High School (School Year 2019–2020)**

Student Group	Total Enrollment	Number Tested	Percent Tested	Percent Not Tested	Percent Met or Exceeded
All Students	N/A	N/A	N/A	N/A	N/A
Male	N/A	N/A	N/A	N/A	N/A
Female	N/A	N/A	N/A	N/A	N/A
Black or African American	N/A	N/A	N/A	N/A	N/A
American Indian or Alaska Native	N/A	N/A	N/A	N/A	N/A
Asian	N/A	N/A	N/A	N/A	N/A
Filipino	N/A	N/A	N/A	N/A	N/A
Hispanic or Latino	N/A	N/A	N/A	N/A	N/A
Native Hawaiian or Pacific Islander	N/A	N/A	N/A	N/A	N/A
White	N/A	N/A	N/A	N/A	N/A
Two or More Races	N/A	N/A	N/A	N/A	N/A
Socioeconomically Disadvantaged	N/A	N/A	N/A	N/A	N/A
English Learners	N/A	N/A	N/A	N/A	N/A
Students with Disabilities	N/A	N/A	N/A	N/A	N/A
Students Receiving Migrant Education Services	N/A	N/A	N/A	N/A	N/A

Student Group	Total Enrollment	Number Tested	Percent Tested	Percent Not Tested	Percent Met or Exceeded
Foster Youth	N/A	N/A	N/A	N/A	N/A
Homeless	N/A	N/A	N/A	N/A	N/A

Note: Cells with N/A values do not require data.

Note: The 2019–2020 data are not available. Due to the COVID-19 pandemic, Executive Order N-30-20 was issued which waived the requirement for statewide testing for the 2019–2020 school year.

Last updated: 1/19/2021

Career Technical Education (CTE) Programs (School Year 2019–2020)

N/A

*Last updated: 1/19/2021***Career Technical Education (CTE) Participation (School Year 2019–2020)**

Measure	CTE Program Participation
Number of Pupils Participating in CTE	0
Percent of Pupils that Complete a CTE Program and Earn a High School Diploma	0.00%
Percent of CTE Courses that are Sequenced or Articulated Between the School and Institutions of Postsecondary Education	0.00%

Last updated: 1/15/2021

Courses for University of California (UC) and/or California State University (CSU) Admission

UC/CSU Course Measure	Percent
2019–2020 Pupils Enrolled in Courses Required for UC/CSU Admission	0.00%
2018–2019 Graduates Who Completed All Courses Required for UC/CSU Admission	0.00%

State Priority: Other Pupil Outcomes

Last updated: 1/15/2021

The SARC provides the following information relevant to the State priority: Other Pupil Outcomes (Priority 8):

- Pupil outcomes in the subject area of physical education

California Physical Fitness Test Results (School Year 2019–2020)

Grade Level	Percentage of Students Meeting Four of Six Fitness Standards	Percentage of Students Meeting Five of Six Fitness Standards	Percentage of Students Meeting Six of Six Fitness Standards

Note: Cells with N/A values do not require data.

Note: The 2019–2020 data are not available. Due to the COVID-19 pandemic, Executive Order N-56-20 was issued which waived the requirement to administer the physical fitness performance test for the 2019–2020 school year.

Last updated: 1/19/2021

State Priority: Parental Involvement

The SARC provides the following information relevant to the State priority: Parental Involvement (Priority 3):

- Efforts the school district makes to seek parent input in making decisions for the school district and each school site

Opportunities for Parental Involvement (School Year 2020–2021)

Julia Lee Performing Arts Academy Parents are able to participate in the following: Parent University, School Advisory Committee, English Learners Committee and other activities day to day.

Last updated: 1/19/2021

State Priority: Pupil Engagement

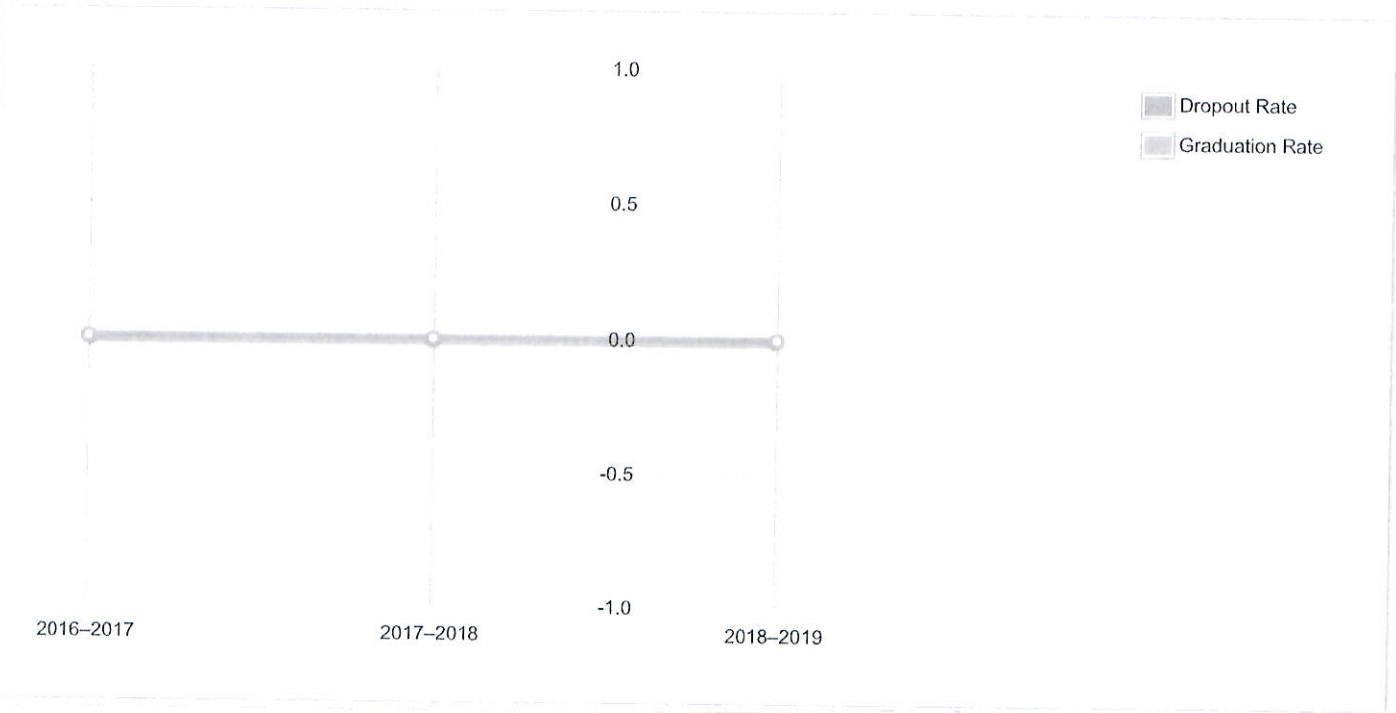
The SARC provides the following information relevant to the State priority: Pupil Engagement (Priority 5):

- High school dropout rates; and
- High school graduation rates

Dropout Rate and Graduation Rate (Four-Year Cohort Rate)

Indicator	School 2016- 2017	School 2017- 2018	School 2018- 2019	District 2017- 2018	District 2017- 2018	District 2018- 2019	State 2017- 2018	State 2017- 2018	State 2018- 2019
Dropout Rate	0.00%	0.00%	0.00%	45.90%	45.90%	36.10%	9.10%	9.60%	9.00%
Graduation Rate	--	--	--	29.70%	31.70%	41.20%	82.70%	83.00%	84.50%

Dropout/Graduation Rate (Four-Year Cohort Rate) Chart



Last updated: 1/19/2021

State Priority: School Climate

The SARC provides the following information relevant to the State priority: School Climate (Priority 6):

- Pupil suspension rates;
- Pupil expulsion rates; and
- Other local measures on the sense of safety

Suspensions and Expulsions

(data collected between July through June, each full school year respectively)

Rate	Suspensions	Expulsions
School 2017–2018	0.00%	0.00%
School 2018–2019	0.00%	0.00%
District 2017–2018	4.60%	0.00%
District 2018–2019	2.60%	0.00%
	3.50%	0.10%
	3.50%	0.10%

State
2017–2018

Suspensions and Expulsions for School Year 2019–2020 Only

State (data collected between July through February, partial school year due to the COVID-19 pandemic)

Rate	Suspensions	Expulsions
School 2019–2020	0.00%	0.00%
District 2019–2020	0.00%	0.00%
	--	--

State
2019–2020

Note: The 2019–2020 suspensions and expulsions rate data are not comparable to prior year data because the 2019–2020 school year is a partial school year due to the COVID-19 crisis. As such, it would be inappropriate to make any comparisons in rates of suspensions and expulsions in the 2019–2020 school year compared to prior years.

Last updated: 1/19/2021

School Safety Plan (School Year 2020–2021)

The safety plan was last updated on September 10, 2019 and is posted on the schools website. The school safety plan s currently being updated with COVID-19 Cal Osha requirements. Once updated it will be approved by the governing board and shared and reviewed with all teachers, staff and parents.

Last updated: 1/19/2021

The information in this section is required to be in the SARC but is not included in the state priorities for LCFF.

Average Class Size and Class Size Distribution (Elementary) School Year (2017–2018)

Grade Level	K	1	2	3	4	5	6	Other**
Average Class Size								
Number of Classes * 1-20								

Number of Classes * 21-32 * Number of classes indicates how many classes fall into each size category (a range of total students per class).

** "Other" category is for multi-grade level classes.

Number of Classes * 33+

Average Class Size and Class Size Distribution (Elementary) School Year (2018–

2019)

Grade Level	K	1	2	3	4	5	6	Other**
Average Class Size	26.00	25.00	26.00	18.00	18.00			
Number of Classes * 1-20	1			1	1			
Number of Classes * 21-32	2	1	1					

Number of Classes * 33+ * Number of classes indicates how many classes fall into each size category (a range of total students per class).

** "Other" category is for multi-grade level classes.

Average Class Size and Class Size Distribution (Elementary) School Year (2019–2020)

Grade Level	K	1	2	3	4	5	6	Other**
Average Class Size	22.00	20.00	18.00	20.00	22.00	20.00	23.00	
Number of Classes * 1-20	6	3	3	3		3		
Number of Classes * 21-32	3	3	3	3	3		3	

Number of Classes * 33+

* Number of classes indicates how many classes fall into each size category (a range of total students per class).

** "Other" category is for multi-grade level classes.

Last updated: 1/19/2021

Average Class Size and Class Size Distribution (Secondary) (School Year 2017–2018)

Subject	English	Mathematics	Science	Social Science
Average Class Size				
Number of Classes * 1-22				

Number of Classes * 23-32 * Number of classes indicates how many classrooms fall into each size category (a range of total students per classroom). At the secondary school level, this information is reported by subject area rather than grade level.

Number of Classes * 33+

Average Class Size and Class Size Distribution (Secondary) (School Year 2018–

2019)

Subject	English	Mathematics	Science	Social Science
Average Class Size				
Number of Classes * 1-22				

Number of Classes * 23-32 * Number of classes indicates how many classrooms fall into each size category (a range of total students per classroom). At the secondary school level, this information is reported by subject area rather than grade level.

Number of Classes * 33+

Average Class Size and Class Size Distribution (Secondary) (School Year 2019–

2020)

Subject	English	Mathematics	Science	Social Science
Average Class Size				
Number of Classes * 1-22				

Number of Classes * 23-32

Number of Classes * 33+

* Number of classes indicates how many classrooms fall into each size category (a range of total students per classroom). At the secondary school level, this information is reported by subject area rather than grade level.

Last updated: 1/19/2021

Ratio of Pupils to Academic Counselor (School Year 2019–2020)

Title	Ratio
Pupils to Academic Counselor*	0.0

*One full time equivalent (FTE) equals one staff member working full time; one FTE could also represent two staff members who each work 50 percent of full time.

Last updated: 1/19/2021

Student Support Services Staff (School Year 2019–2020)

	Number of FTE* Assigned to School
Counselor (Academic, Social/Behavioral or Career Development)	0.00
Library Media Teacher (Librarian)	0.00
Library Media Services Staff (Paraprofessional)	0.00
Psychologist	0.00
Social Worker	0.00
Nurse	0.00
Speech/Language/Hearing Specialist	0.00
Resource Specialist (non-teaching)	0.00
Other	0.00

*One full time equivalent (FTE) equals one staff member working full time; one FTE could also represent two staff members who each work 50 percent of full time.

Last updated: 1/19/2021

Expenditures Per Pupil and School Site Teacher Salaries (Fiscal Year 2018–2019)

Level	Total Expenditures Per Pupil	Expenditures Per Pupil (Restricted)	Expenditures Per Pupil (Unrestricted)	Average Teacher Salary
School Site	--	--	--	--
District	N/A	N/A	--	--
Percent Difference – School Site and District	N/A	N/A	--	--
State	N/A	N/A	\$7750.12	--

Level	Total Expenditures Per Pupil	Expenditures Per Pupil (Restricted)	Expenditures Per Pupil (Unrestricted)	Average Teacher Salary
Percent Difference – School Site and State	N/A	N/A	--	--

Note: Cells with N/A values do not require data.

Last updated: 1/19/2021

Types of Services Funded (Fiscal Year 2019–2020)

Resource Specialist (RSP)
Occupational Therapy (OT)
Speech

Last updated: 1/19/2021

Teacher and Administrative Salaries (Fiscal Year 2018–2019)

Category	District Amount	State Average For Districts In Same Category
Beginning Teacher Salary	--	--
Mid-Range Teacher Salary	--	--
Highest Teacher Salary	--	--
Average Principal Salary (Elementary)	--	--
Average Principal Salary (Middle)	--	--
Average Principal Salary (High)	--	--
Superintendent Salary	--	--
Percent of Budget for Teacher Salaries	--	--
Percent of Budget for Administrative Salaries	--	--

For detailed information on salaries, see the CDE Certificated Salaries & Benefits web page at <https://www.cde.ca.gov/ds/fd/cs/>.

Teacher Salary Chart



Principal Salary Chart



Last updated: 1/19/2021

Advanced Placement (AP) Courses (School Year 2019–2020)

Percent of Students in AP Courses 0.00%

Subject	Number of AP Courses Offered*
Computer Science	0
English	0
Fine and Performing Arts	0
Foreign Language	0
Mathematics	0
Science	0
Social Science	0
Total AP Courses Offered*	0

*Where there are student course enrollments of at least one student.

Last updated: 1/19/2021

Professional Development

Measure	2018–2019	2019–2020	2020–2021
Number of school days dedicated to Staff Development and Continuous Improvement	10	10	10

Questions: SARC TEAM | sarc@cde.ca.gov | 916-319-0406

California Department of Education
1430 N Street
Sacramento, CA 95814